

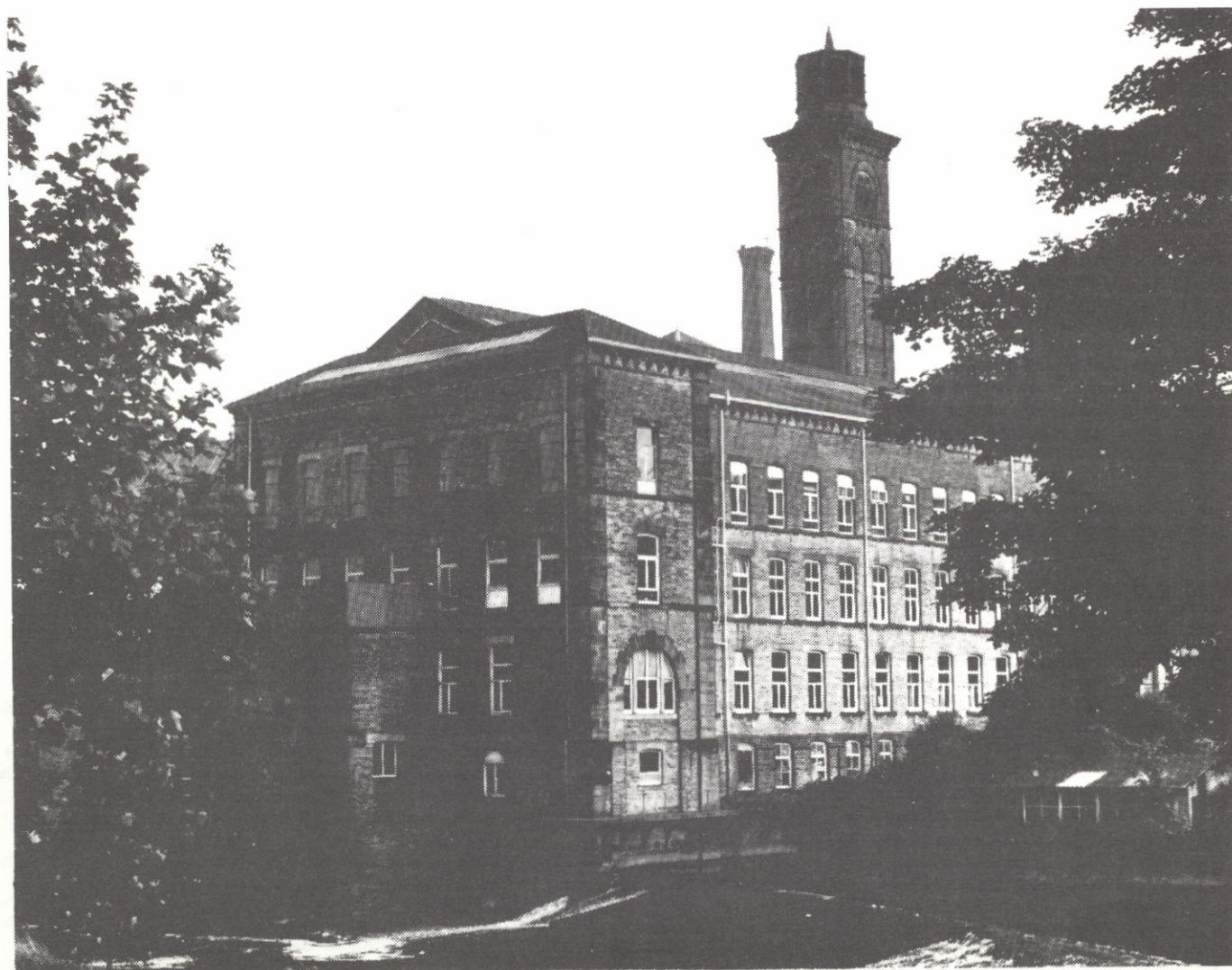
## Publications issue

### TITUS OF SALTS

Published by Watmoughs Limited, Idle, Bradford, Yorkshire — Price 90p. This booklet, produced to coincide with the centenary of Titus Salt's death, contains useful articles on Salt himself and the development of the Company and Village which he built. The articles on the History of the Company and the architecture of the Village are particularly useful. It is very gratifying to find a full bibliography and the booklet is well worth acquiring by all those involved in industrial communities.

### BRADFORD MUSEUM TRAILS

The City of Bradford Museum have produced two trails on 'Bradford City Hall and its surroundings', by John Ayers and 'Saltaire — an introduction to the village of Sir Titus Salt' by Jack Reynolds. The booklet on the City Hall is obtainable at 10p, (postage included 17p) and City Trail No. 2 on Saltaire is available at 35p (postage included 45p) from Bradford Industrial Museum, Moorside Mills, Moorside Road, Bradford, West Yorkshire BD2 3HP. The City Trail is nicely produced and follows the normal format for town trails. Industrial archaeologists will find the booklet on Saltaire of more value as it describes in detail the buildings and surroundings to the world famous mills of Salt. Readers will find the walk-about guide to the village of particular use as there are fine photographs and engravings in the booklet. This booklet complements the book 'Titus of Salts'.



## WATERWAY USERS' COMPANION 1977

This popular paperback was published on the 8th January by the British Waterways Board. The information from previous years has been revised and new information added, making it a comprehensive work of reference.

Contents include addresses of boat hire firms, cruising and angling clubs, canal societies and inland navigation authorities, plus a list of the Board's local offices. The booklet also contains articles and illustrations with diagrams showing rules of the road and how to operate locks. Other standard features are a list of sanitary and pump-out stations and addresses of waterways museums.

Copies price 60p plus 15p postage and packing from British Waterways Board, Melbury House, Melbury Terrace, London NW1 6JX.

---

## WATERWAYS NEWS

Published by the British Waterways Board and obtainable from them at a subscription of £1.50 for 11 issues from the Press and Publicity Office, British Waterways Board, Melbury House, Melbury Terrace, London NW1 6JX.

Recent issues of Waterways News have contained much that is of interest to industrial archaeologists. The December 1976 issue, for instance, included articles on the canals of Sweden, on some of the traditional craft of the Yorkshire waterways, on boat horses and a long feature on the Duke of Bridgewater's underground canals. The back page features a full colour photograph of the Anderton boat lift.

More recent issues have included a fascinating account of recent repairs to Harecastle Tunnel (January 1977) and an appreciation of the magnificent engineering and fine scenery of the little-known Leeds and Liverpool Canal (March 1977). Now that this excellent house journal has dispensed with coverage of darts matches and presentations of gold watches, in favour of material with wider appeal, Waterways News deserves serious consideration by anyone remotely interested in inland navigation.

---

## THE BOWES RAILWAY

by Colin E Mountford, Published by the Tyne and Wear Industrial Monuments Trust and The Industrial Railway Society. Available from Sandyford House, Newcastle upon Tyne, NE2 1ED. Hard back £3.50, Paperback £2.70, plus 50p postage and packing. This new and considerably enlarged addition of the history of the Bowes Railway traces the history of the line and then deals with various aspects in greater detail — the rope worked sections, the locomotives, the wagons and the men who worked on it. It has been well researched and is lavishly illustrated with over 150 photographs, the oldest well over 100 years old and nearly 20 maps or diagrams.

---

## SAVE THE CITY

A conservation study of the City of London has been put together by the Society for the Protection of Ancient Buildings, the Georgian Group, the Victorian Society and the Civic Trust. This joint effort was financed by many generous donations from City organisations and charities. It is aimed both at the planners in the City Corporation and at a wider public as a basis for conserving the City's unique character without prejudice to its outstanding international role as a financial centre. The publication has been prepared by David Lloyd (General Editor), Jennifer Freeman (Co-ordinator) and Jane Fawcett (Secretary of the Victorian Society); the foreword written by the Duke of Grafton puts the publication in its context. The report includes a historical introduction, a detailed townscape analysis, area by area, covering the visual and historic character of street scenes and of individual chapters on special subjects including City churches, open spaces and landscape, living in the City, the water front, pubs and

restaurants, archaeology and, not least important the economics of conservation.

Although the publication does not contain an enormous amount of industrial archaeology it is extremely well presented and would be of very great value to those of the membership who were involved in putting an argument to a planning authority. The publication is obtainable price £3.00 plus 75p postage from The Society for the Protection of Ancient Buildings, 55 Great Ormond Street, London WC1N 3JA.

---

## THE HERTFORD LOOP

The Southgate Civic Trust have produced a centennial history of their local railway line The Hertford Loop. This booklet written by Peter Hodge is obtainable at 60p from the Honorary Secretary, Southgate Civic Trust, 70 Vicars Moor Lane, London N21. Very few Civic Trusts have provided booklets on the history of their local railway lines but in this case the development of suburban railways in North London has been fundamental to the growth of the urban settlement. This well produced booklet of 32 pages is fascinating to both the railway historian and also those who study the growth of conurbations.

---

## CIVIC TRUST NEWS

The bulletin of the Civic Trust obtainable from them at £2.50 for 6 issues is packed with news and information of the conservation movement in Great Britain. The Civic Trust at 17 Carlton House Terrace, London SW1Y 5AW, is the co-ordinating body for the Civic Societies of Great Britain. One of the most fascinating aspects of the newsletter is the advertisements which might be of particular interest to those in Groups who are wishing to preserve and restore buildings or raise finance.

---

## PINNER STREETS – YESTERDAY AND TODAY

The book contains an account of the photographic and street survey undertaken by the Pinner & Hatch End Local Historical and Archaeological Society since 1972, covering Pinner, Pinner Green, Hatch End, Headstone, North Harrow and Rayners Lane.

It describes the distribution of various features, examples of buildings of different dates, brief accounts of development and building and short sections on miscellaneous items, such as street and house names. The book aims to interest the general reader, and direct the local history student to further study of the survey. Price: 70p.

Orders to — Publication Committee, PHELHAS, 121 Eastcote Road, Pinner, Middlesex HA5 1ET

---

## THE EIFFEL TOWER

One of the oddest photographs of British engineering is that of a partly built iron tower rising out of a misty Middlesex countryside. The structure was built on ground later occupied by Wembley Stadium, and it was intended as a British version of the Eiffel Tower. It was never completed, and only Blackpool Tower stands as an English monument to this branch of engineering. Towers have been built in many countries for people to admire and marvel at, and in recent years Seattle and Moscow have had their own examples.

In the nineteenth century Gustave Eiffel had an important part to play in the two most famous, the Statue of Liberty in New York and the tower in Paris named after him. In 'The Eiffel Tower' by Joseph Harris, the story of the French structure is told and copiously illustrated. The world of the Paris Exposition of 1889 is described, as well the story of the Tower. Eiffel's pioneering work in aerodynamics and wind-tunnel